

Assembly and user manual

Cage ladder type 9600

Technical information:

Standard version

4,00m (incl. 1 intermediate piece)

Maximum length

10,00m (7 intermediate pieces)

Weight standard version (4,00m)

205kg

Weight of 1 intermediate piece (1,00m)

35kg

Note:

Before assembly and use, the cage ladder must be checked on all parts. Damaged parts may **not** be used.

1. Mounting the intermediate pieces (depending on the depth)



01

01 The standard version of the cage ladder is 4.00 m long.
(Load capacity 185 kg)



02

02 The length of the cage ladder can be adjusted using a 1.00 m long intermediate pieces. The length can be extended to a maximum of 10.00 m.



03

03 The intermediate pieces are connected with 4 M12 screws each (SW19, thread min. 8.8) with self locking nuts.

2. Hanging the cage ladder



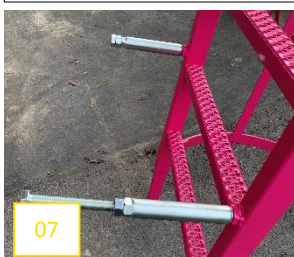
04

04 Hang the cage ladder by using a crane. Fall protection must be closed in peripheral areas.



05

05 There are 2 attachment points on the upper platform for attaching the lifting chains.



07



07

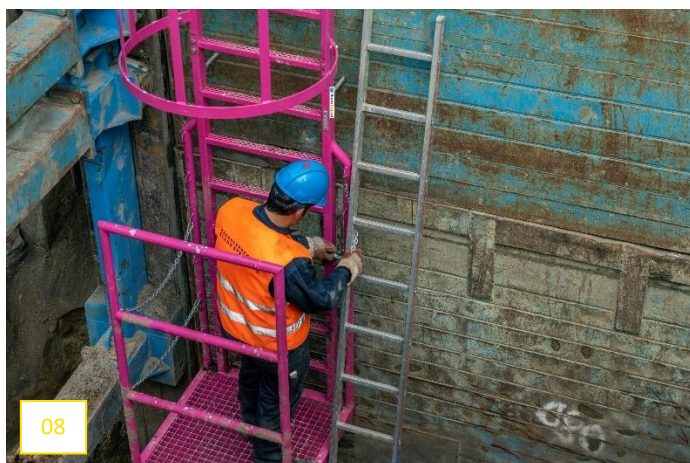


06

06 The ladder must lie completely on the surface, in a suitable and straight manner.

07 There are 2 adjusting screws (SW30) for vertical alignment on the bottom platform and on every 2d intermediate piece of the ladder. The minimum distance must be 150 mm. This is to guarantee sufficient foot security. Depending on your wishes, you can work with or without spacers.

3. Securing the cage ladder



08

08 The ladder is attached to the scaffolding by means of a chain, as tight as possible, around the ladder beam. This is to prevent tipping to the side.

09 Depending on the position, there are 5 eyelets on both sides to attach the carabiner to the chain.



09

4. Descent into the construction pit



10



11

11 Depending on the landing side of the ladder on the lower platform, a chain is released on the right or left with carabiners.

10 The last part of the descent is achieved by a single ladder. This can be placed on either side and attached to the bottom step of the cage ladder.

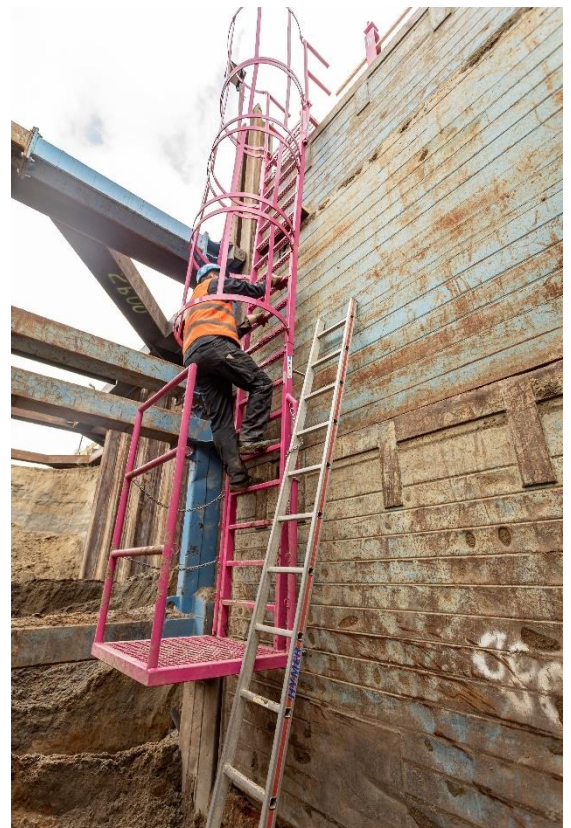
Attention: The remaining height between the bottom step and the bottom should be as small as possible.

Attention: After complete installation and before first use, the ladder must be inspected by a **qualified** person.

5. Fully assembled cage ladder



The cage ladder is ready for use.



Note: For safety, clean shoes for walking up and down the ladder. Top and bottom grilles have been made for this purpose.



Note: The cage ladder may be used by a maximum of 1 person at the same time!

Required checks: According to occupational safety, the cage ladder should be checked at least once a year. This can be done more often, if necessary