

Modular step-up / step-down



Modular step-up / step-down

The modular step-up / step-down was designed to guarantee safe and simple access to portacabins, site trailers and construction cabins.

To guarantee maximum flexibility for the end user, the standard one-step can be transformed into a two- or three step one by only adding a few side beams and steps to the existing Modular step-up / step-down.

The mounting process as well as the conversion into two- and three step is simple by only using a few bolts and nuts.

If needed, a regular Modular step-up / step-down can be turned 90° and installed accordingly to the cabin by rearranging one handrail and the podest fixation.

Alignment of the Modular step-up / step-down is possible via two DW15 rods at the bottom step.

Complying with EN 12811 and manufactured in Germany according to EN 1090, this product combines quality with safety.



Modular step-up / step-down – 1 step

1 Platform

2 Handrails

Weight: 62 kg

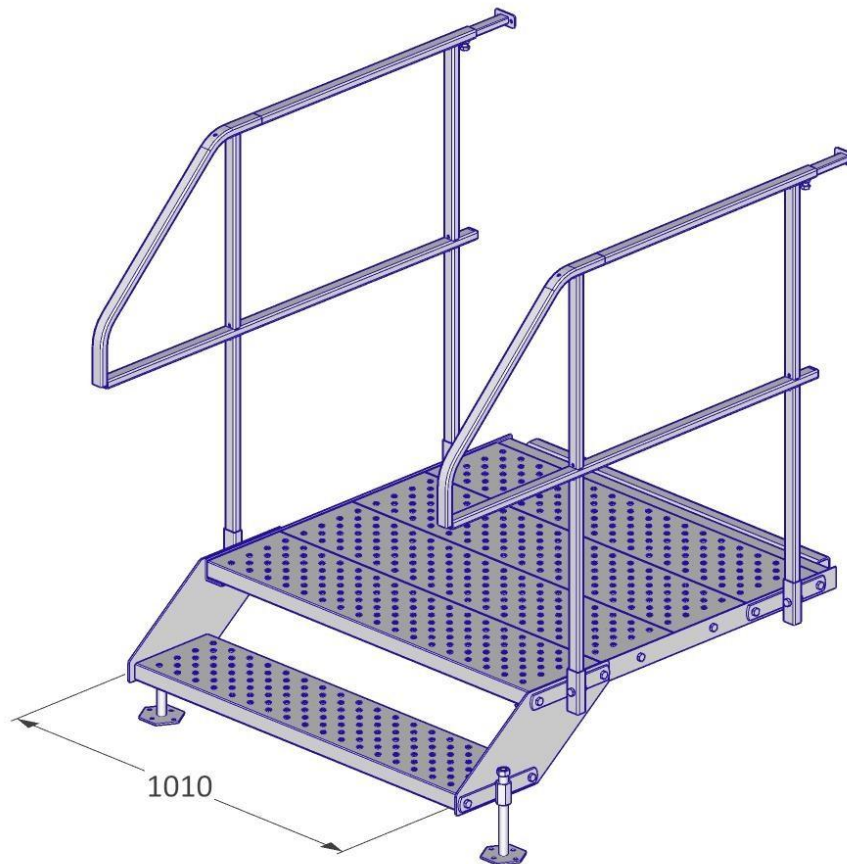
Range: 230 – 360 mm

Width: 1.010 mm

Transport dimensions: 1.200 x 800 x 1.500 mm

Standard: EN12811

Maximum load: 1,5 kN/m²



Modular step-up / step-down – 2 steps

1 Platform

2 Handrails

Weight: 73 kg

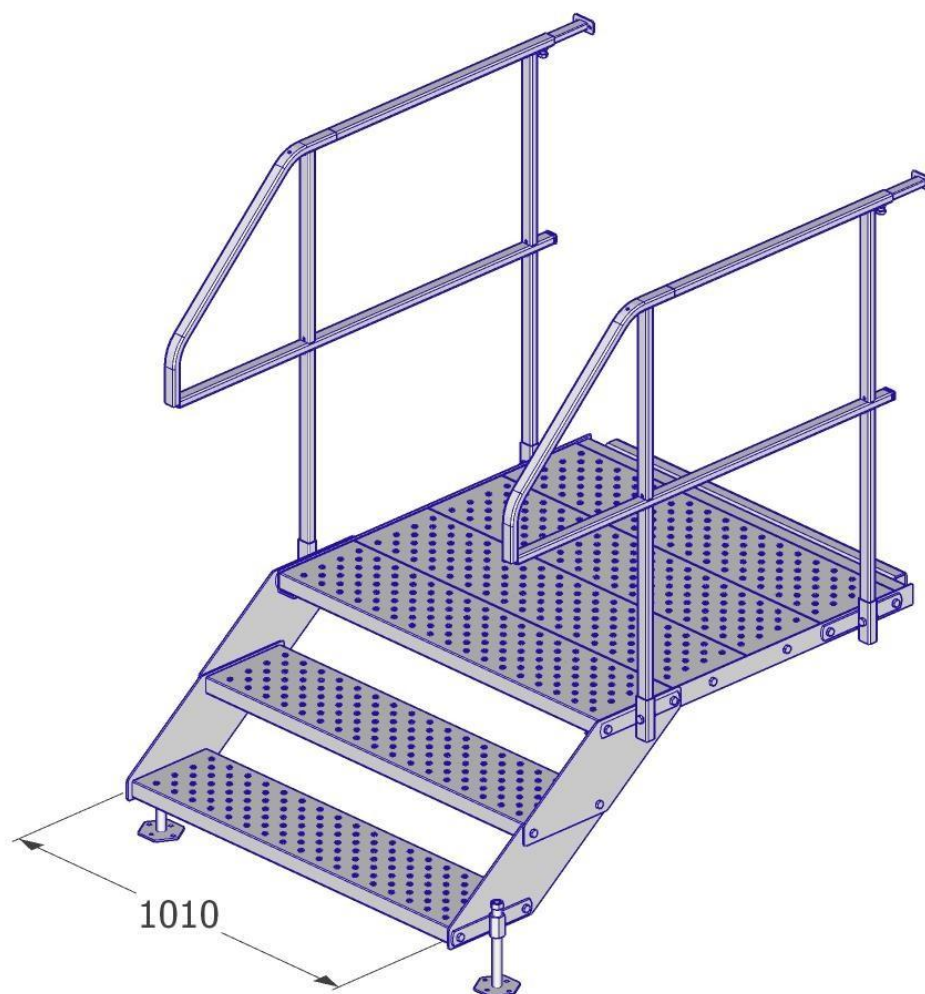
Range: 405 – 535 mm

Width: 1.010 mm

Transport dimensions: 1.200 x 800 x 1.500 mm

Standard: EN12811

Maximum load: 1,5 kN/m²



Modular step-up / step-down – 3 steps

1 Platform

2 Handrails

Weight: 83 kg

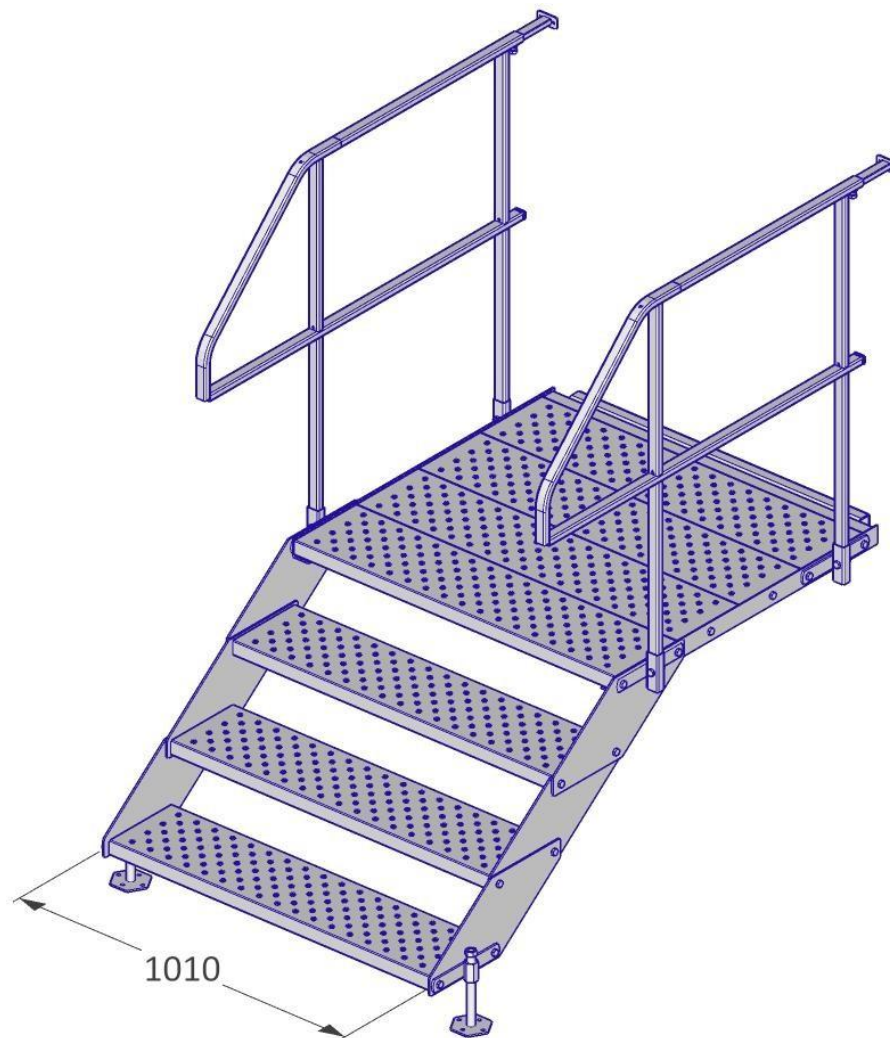
Range: 580 – 710 mm

Width: 1.010 mm

Transport dimensions: 1.200 x 800 x 1.500 mm

Standard: EN12811

Maximum load: 1,5 kN/m²



Modular step-up / step-down – 90°

1 Platform

2 Handrails

Weight: 67 kg

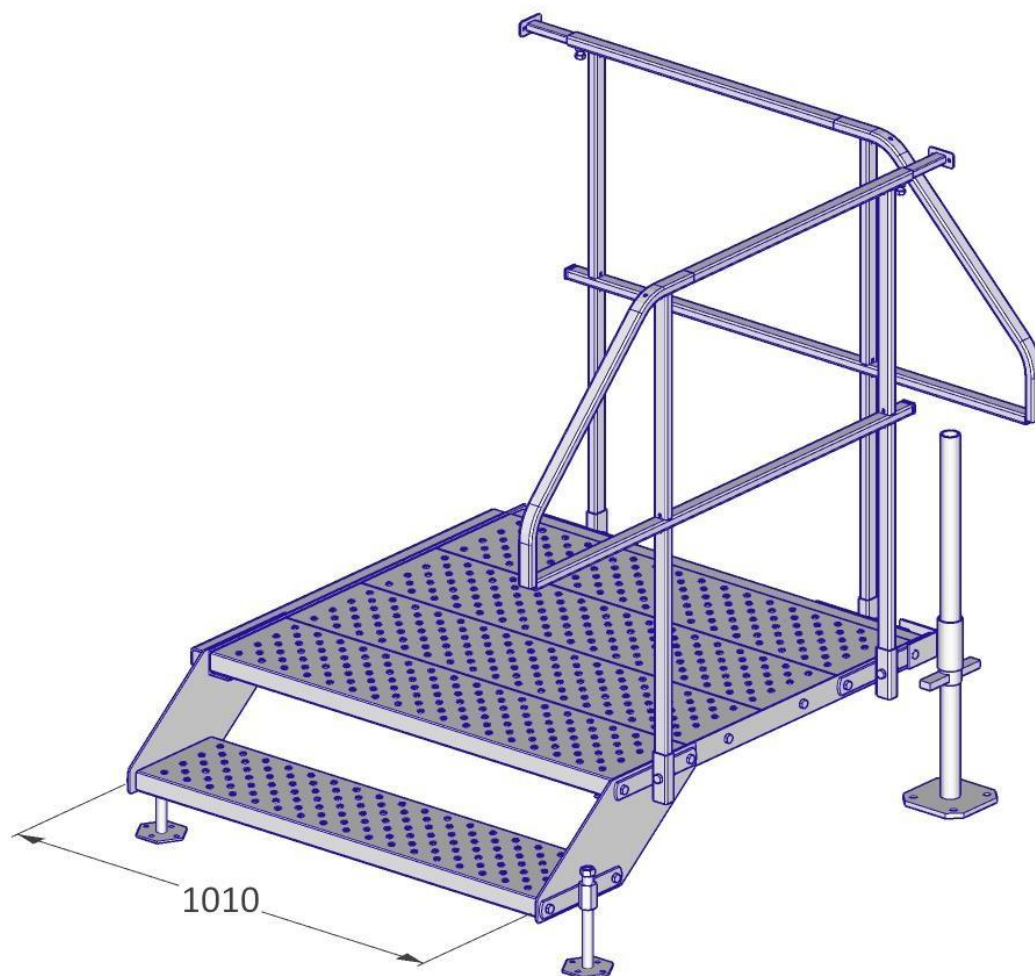
Range: 230 – 360 mm

Width: 1.010 mm

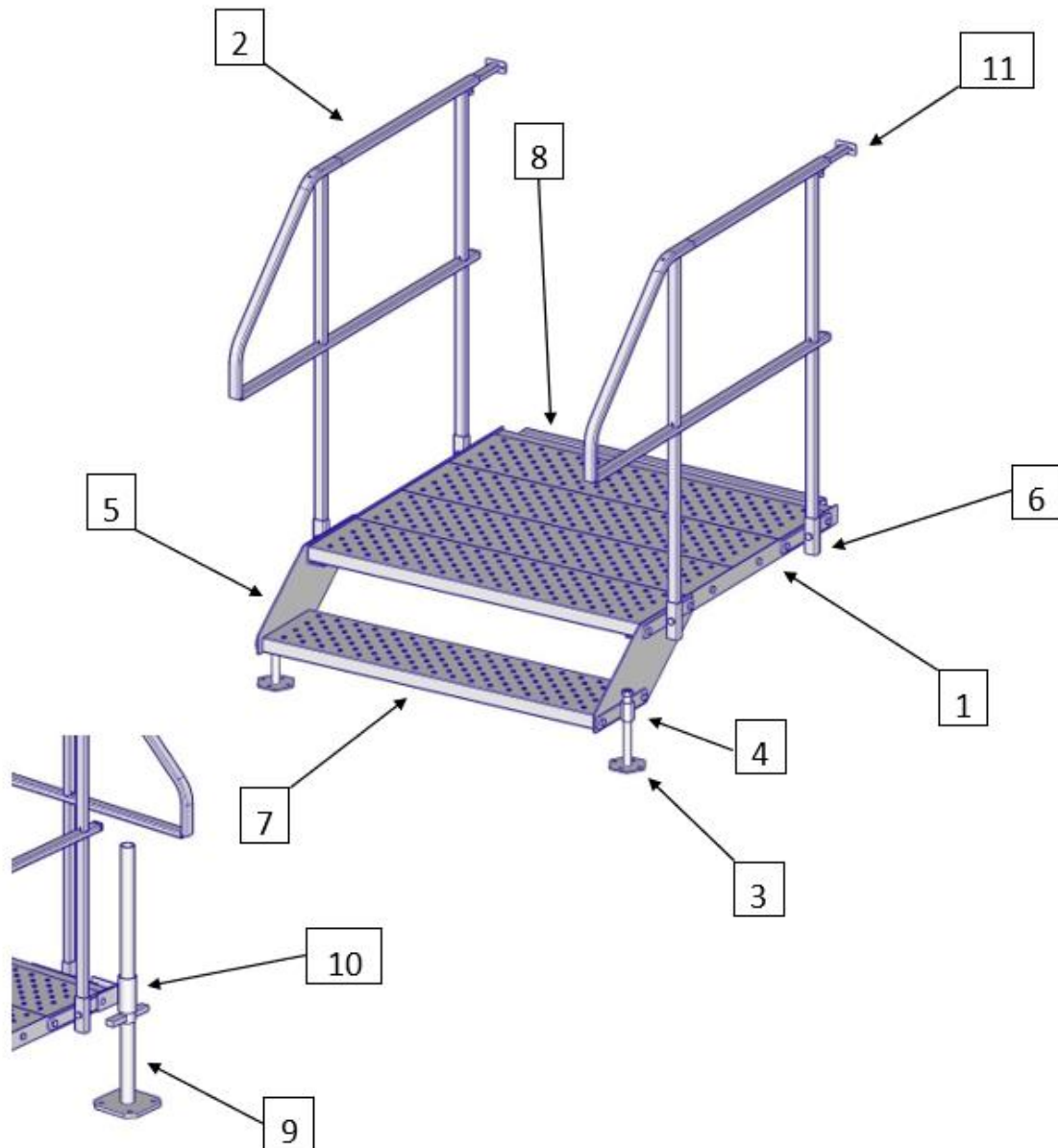
Transport dimensions: 1.200 x 800 x 1.500 mm

Standard: EN12811

Maximum load: 1,5 kN/m²



Parts



1. Modular step-up / step-down

2. Handrail

3. Foot 200

4. Footholder 50

5. Side Beam

6. Handrail Holder 100

7. Step 225x1000

8. 90° fixation

10. Base Jack Attachment

11. Handrail Extension 240

In case of loss: Needed bolts and nuts

1. Bolt M10x20 8.8 DIN 933
2. Bolt M10x35 8.8 DIN 933
3. Bolt M10x60 8.8 DIN 933
4. Nut M10 self-locking 8 DIN 985

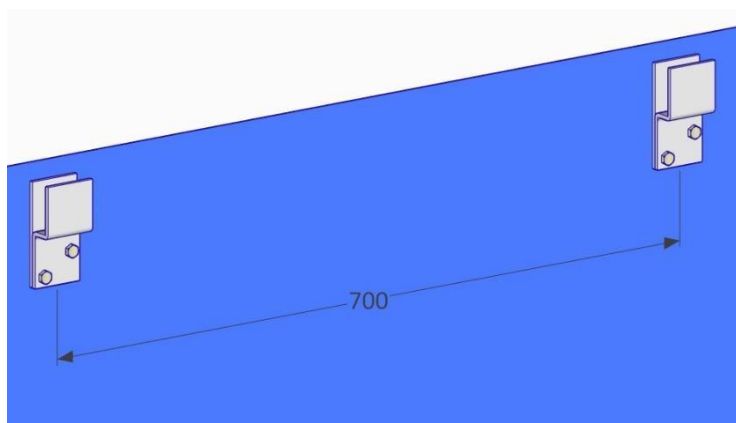
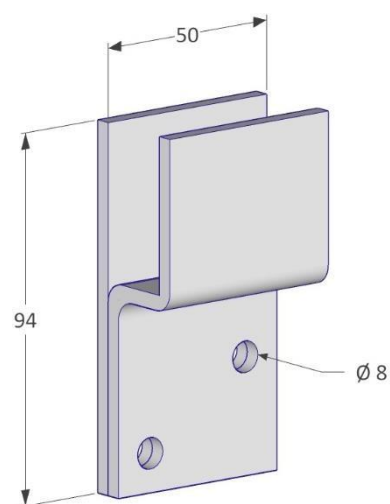
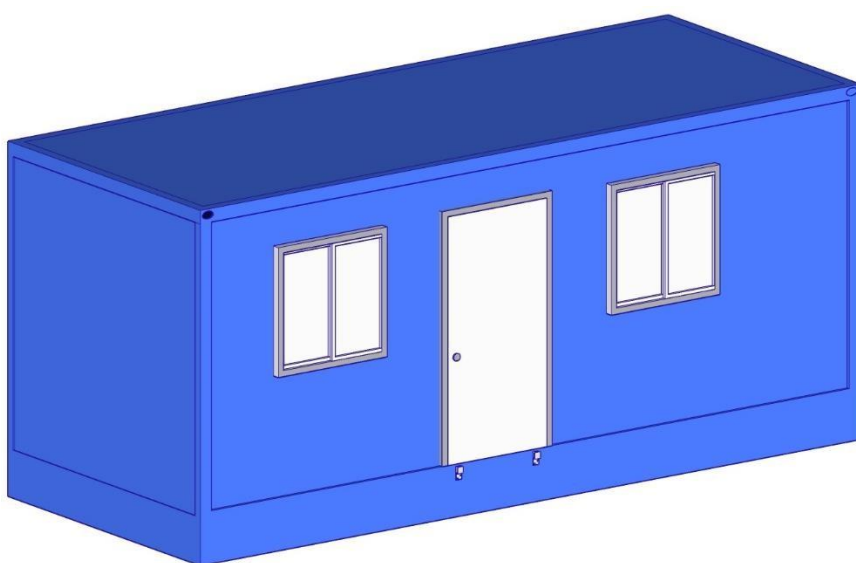
Assembly

1. Mount the attachments to the portacabin. Of the portacabin has already existing attachments mounted beneath the door, this assembly step can be dropped.

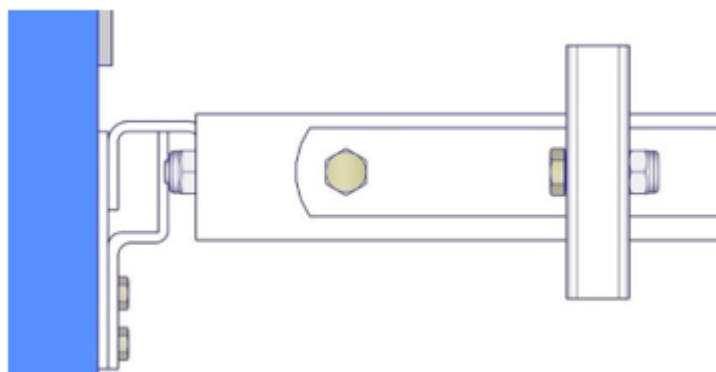
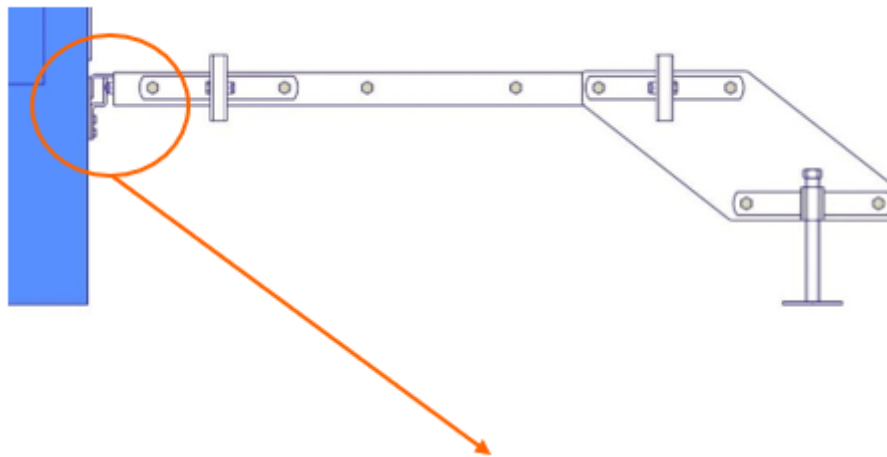
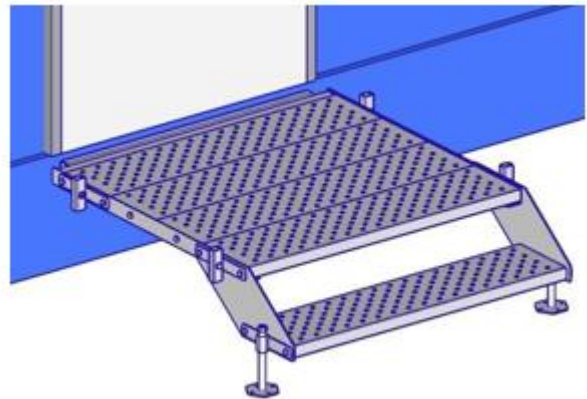
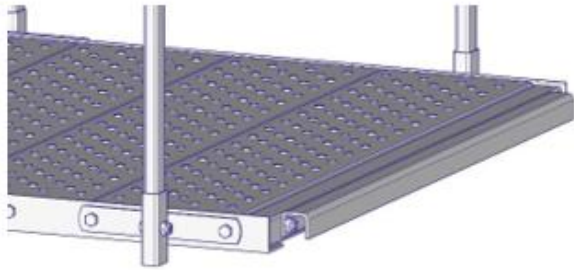
Distance between 2 attachments is 700 mm.

Vertical distance between bottom end of the door and upper end of the attachment should be 15 mm.

Use both screw holes. Use screws that suit the given portacabin (wood screws for wood, tapping screws for sheet metal etc.).



2. Insert the fixation (the U-profile) into the attachments.

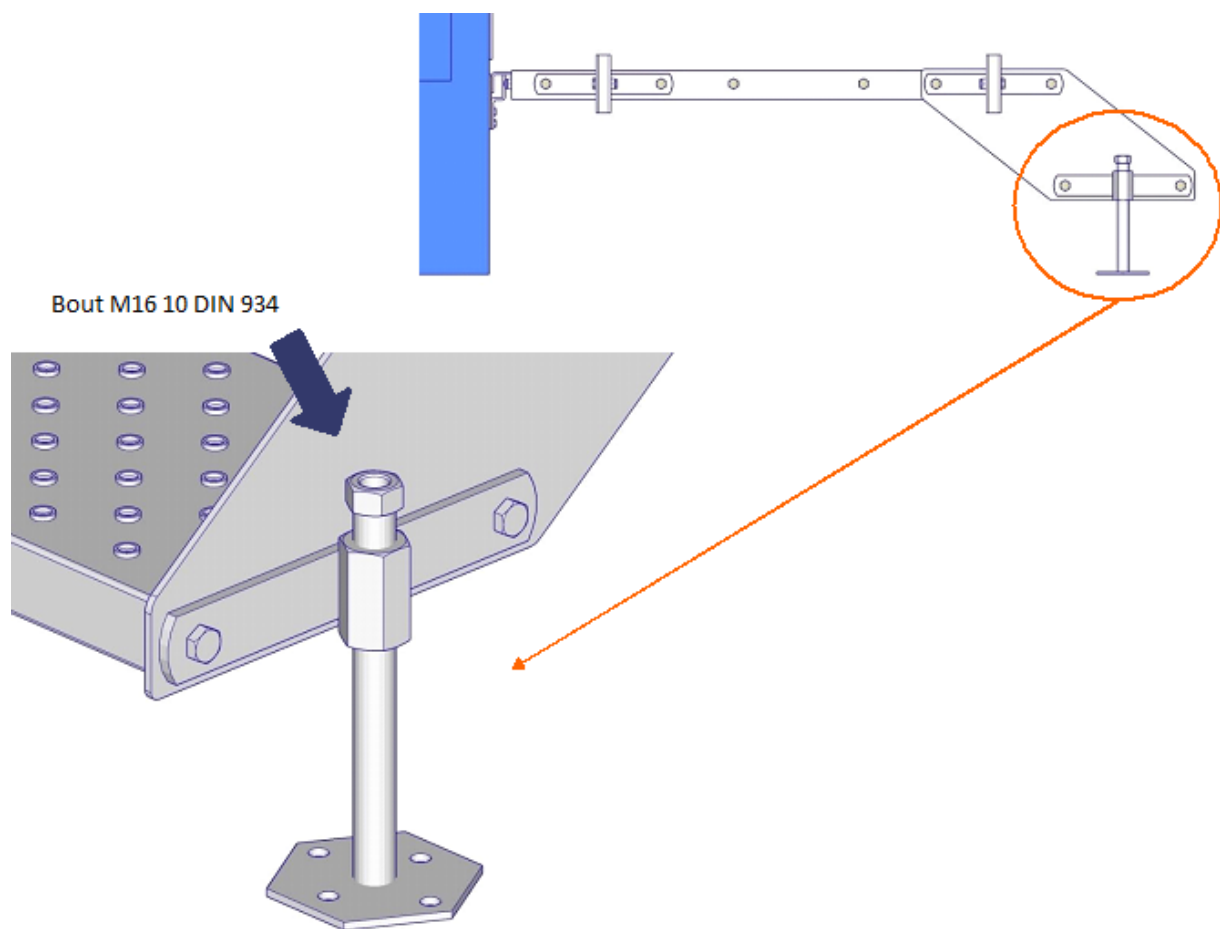


3. Align the Modulair step-up / step-down using the feet with the DW15 rods.

Use a 24 mm wrench to rotate the DW15 rod and by that align the whole step-up / step-down until it is evenly adjusted.

If desired, the feet can be additionally fixed to the ground using the holes within the base plate.

Use a spirit level to double check.

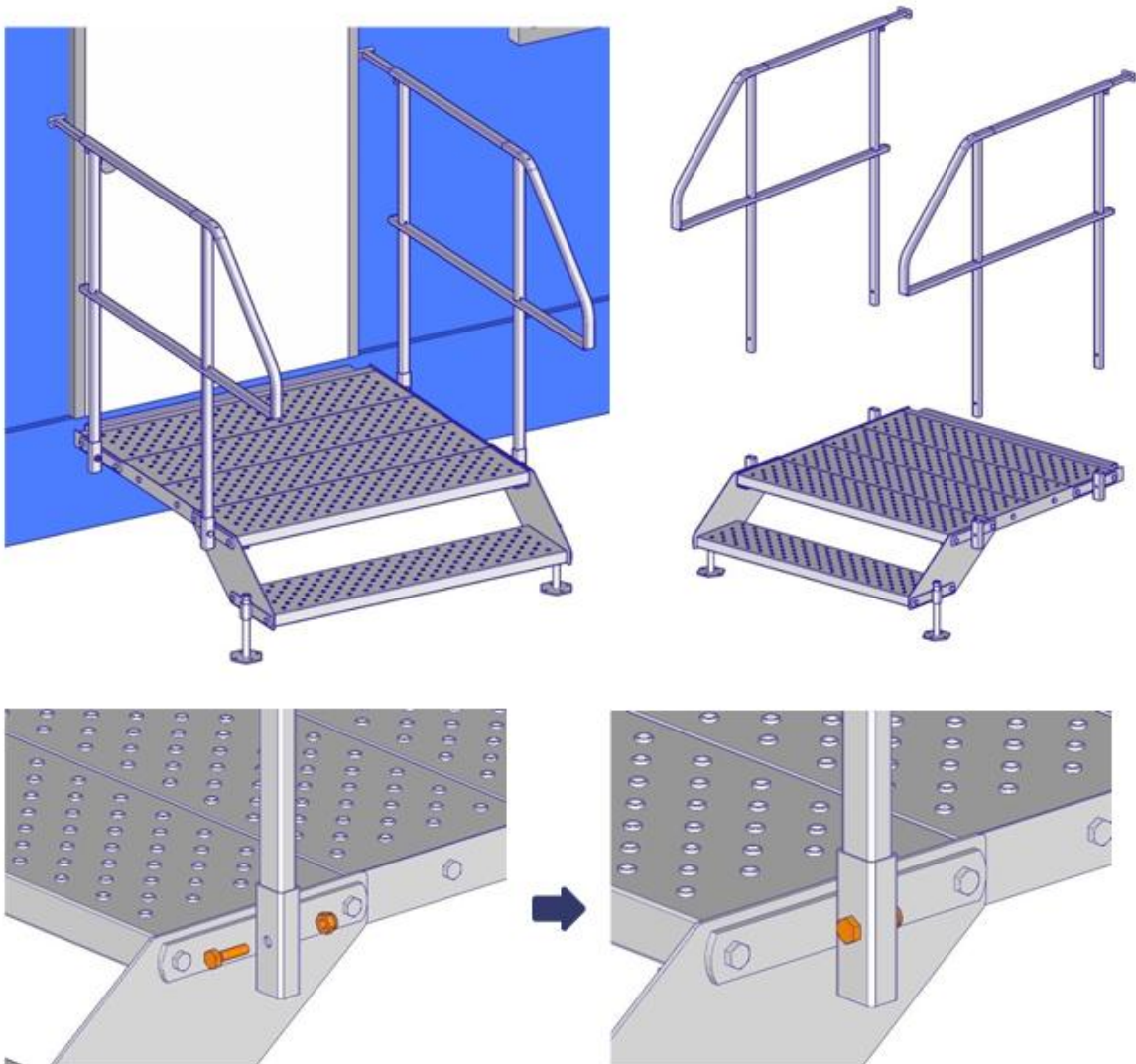


4. Insert the handrails into the handrail holders by using bolts and nuts.

Use bolts M10x35 8.8 DIN 933.

Use stop nuts M10 8 DIN 985.

The bended parts of the handrails are facing the opposite side of the cabin door.

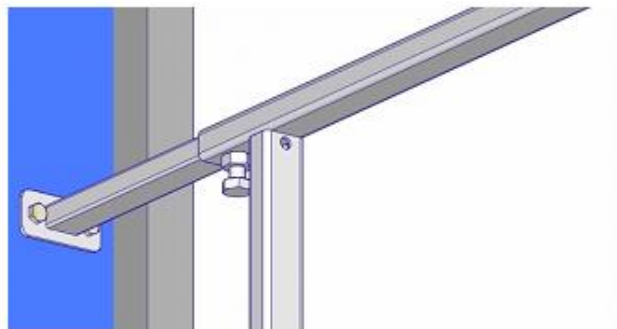
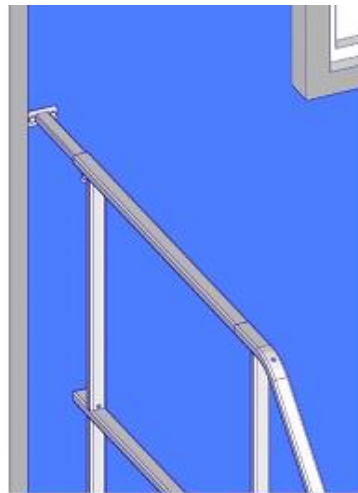
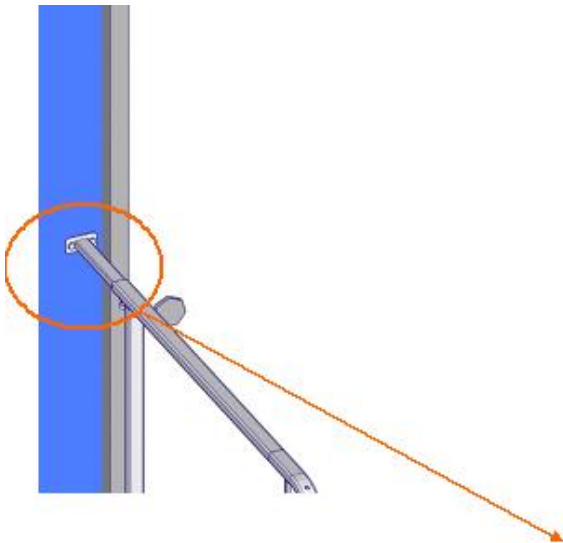
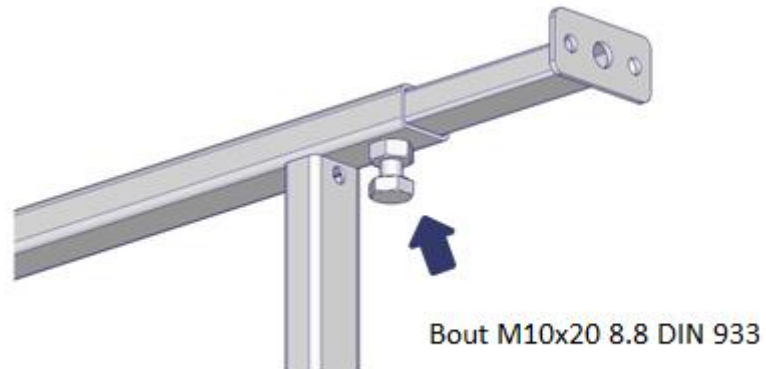


5. Pull out the handrail extensions and fix them to the portacabin.

Use a 17 mm wrench to loose the bolt that fixes the extension to the handrail.

Use the same wrench to tighten it again once the extension has contact with the portacabin.

Use screws that suit the given portacabin (wood screws for wood, tapping screws for sheet metal, etc.).



6. Double check everything!

Check the level using a spirit level.

Check if the handrails are fixed correctly.

Check if the podest fixation (the U-profile) has been inserted safely.

Check if the handrail extensions are mounted correctly tot he portacabin.

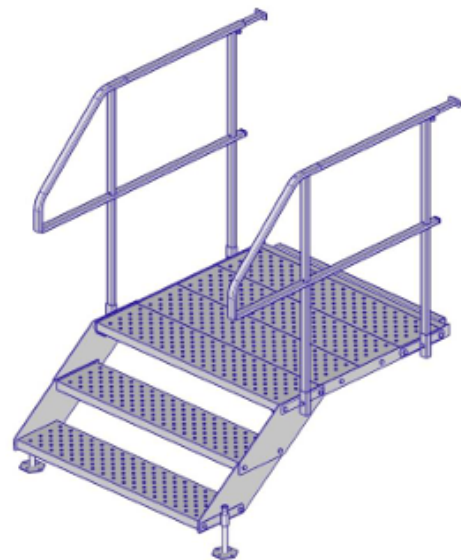
If everything has been checked, the Modular step-up / step-down has been assembled correctly.



Conversion of 1 step into 2 steps



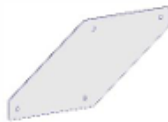
Height 230 – 360 mm



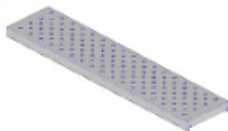
Height 405 – 535 mm

Needed extra parts

- 2 x Side Beam for Podest 1000



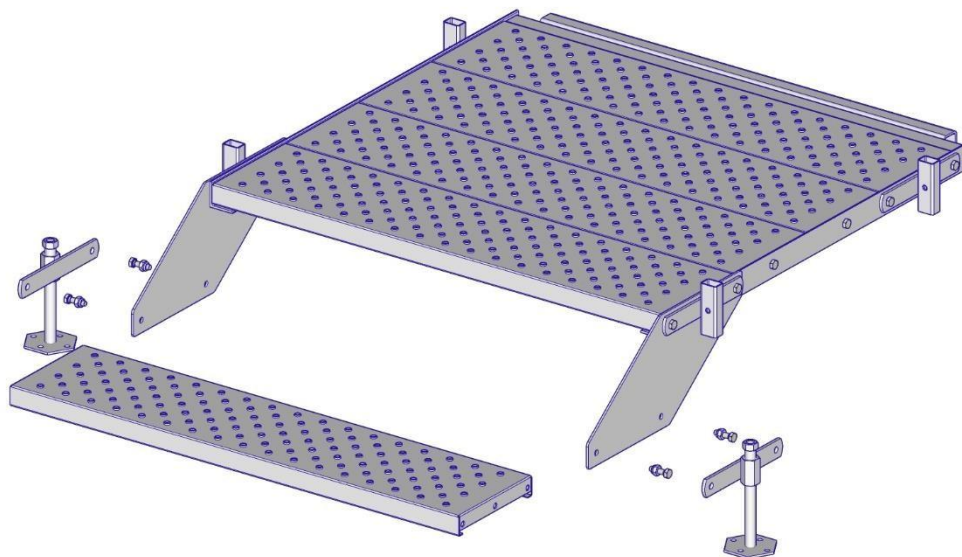
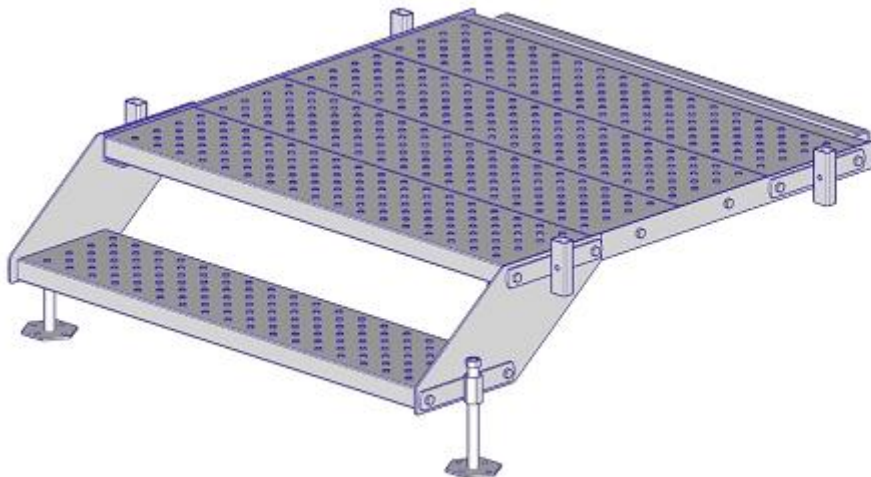
- 1 x Step 225x1000



- 4 x bolt M10x35 8.8 DIN 933
- 4 x stop nut M10 8 DIN 985

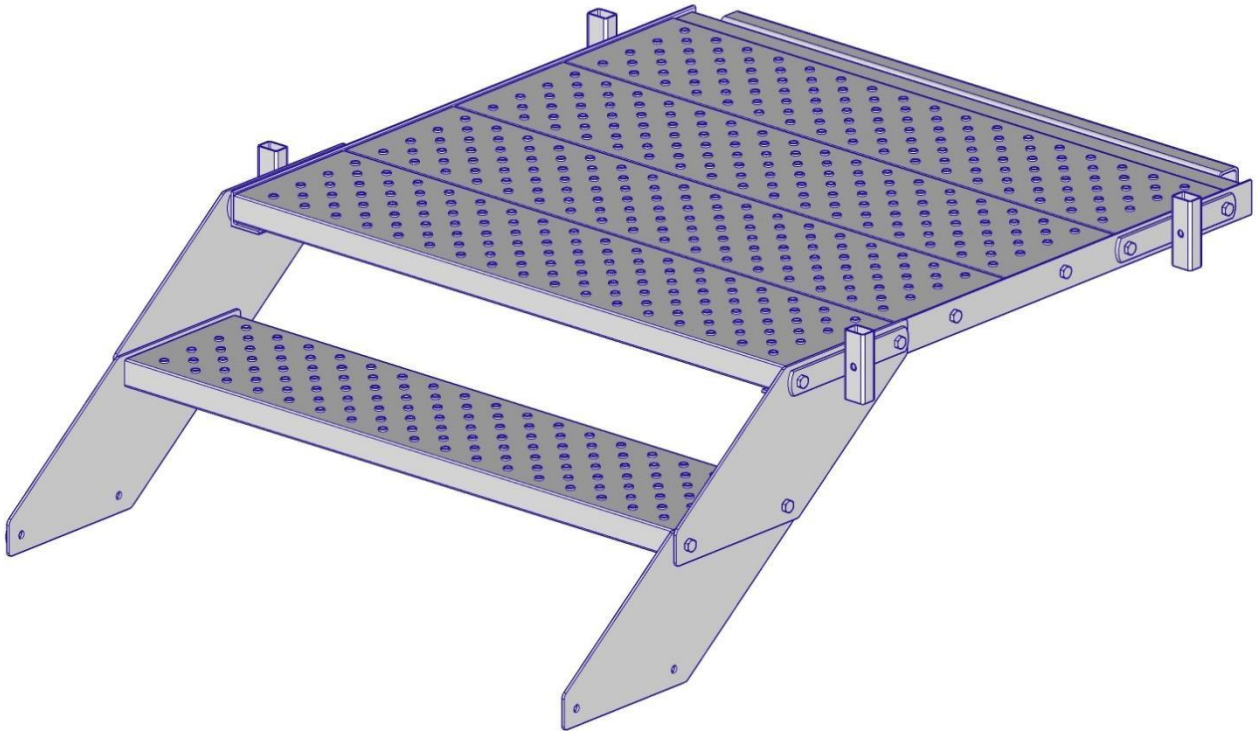
1. Dismantle the fee tand the step.

Use 2 17 mm wrenches or one 17 mm wrench and an impact wrench with a 17 mm nut to loose all bolts and nuts at the bottom end of the side beams.



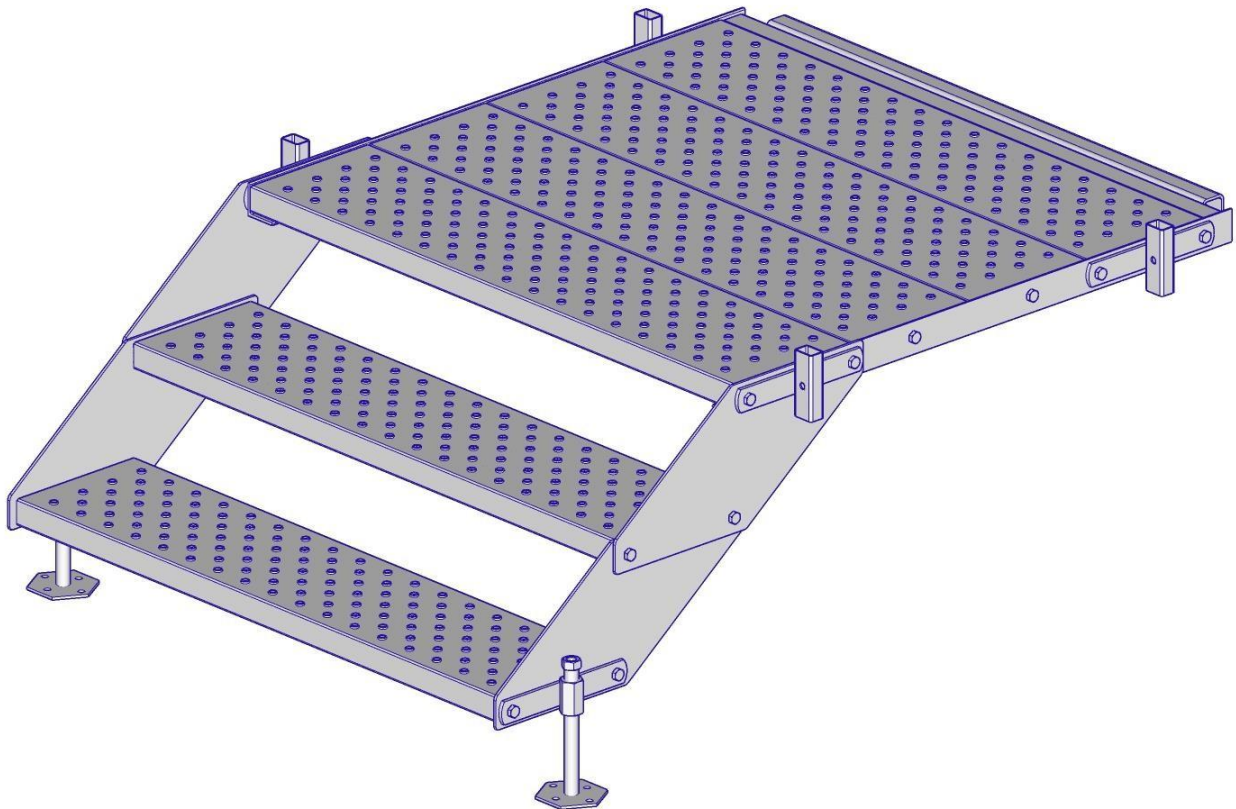
2. Insert 2 side beams and 1 step.

Insert 2 side beams and connect everything with a step using 4 bolts M10x35 8.8 DIN 933 and 4 stop nuts M10 8 DIN 985.



3. Attach the fee tand the bottom step.

Attach the fee tand the bottom step via the remaining holes at the lower part of the side beams using 4 bolts M10x35 8.8 DIN 933 and 4 stop nuts M10 8 DIN 985.



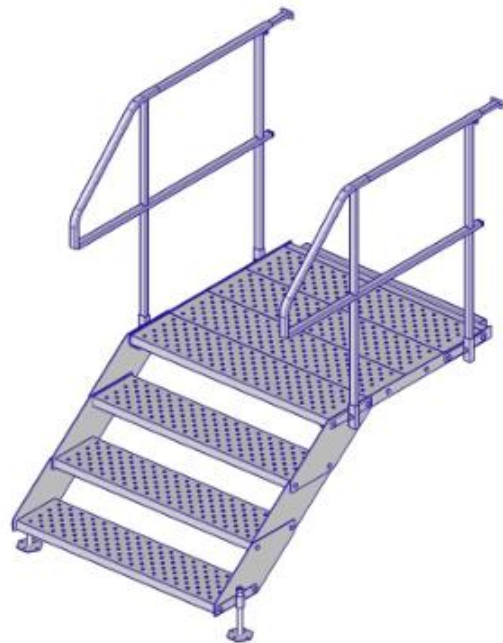
4. The other installation steps are the same like the ones for the Modular step-up / step-down 1 step.



Conversion of the 1 step into 3 steps.



Height 230 – 360 mm



Height 580 – 710 mm

Needed extra parts

- 4 x Side Beam for Podest 1000



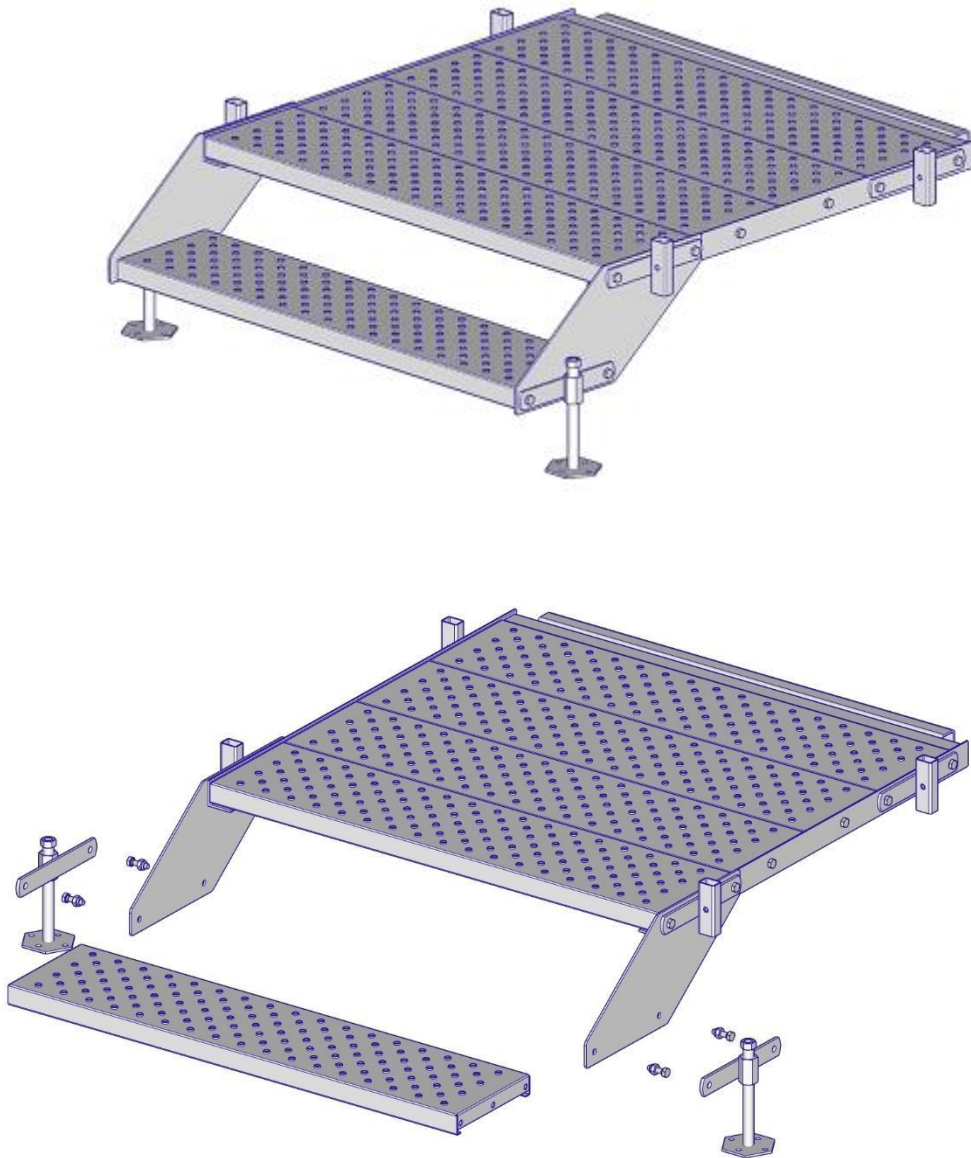
- 2 x Step 225x1000



- 8 x bolt M10x35 8.8 DIN 933
- 8 x stop nut M10 8 DIN 985

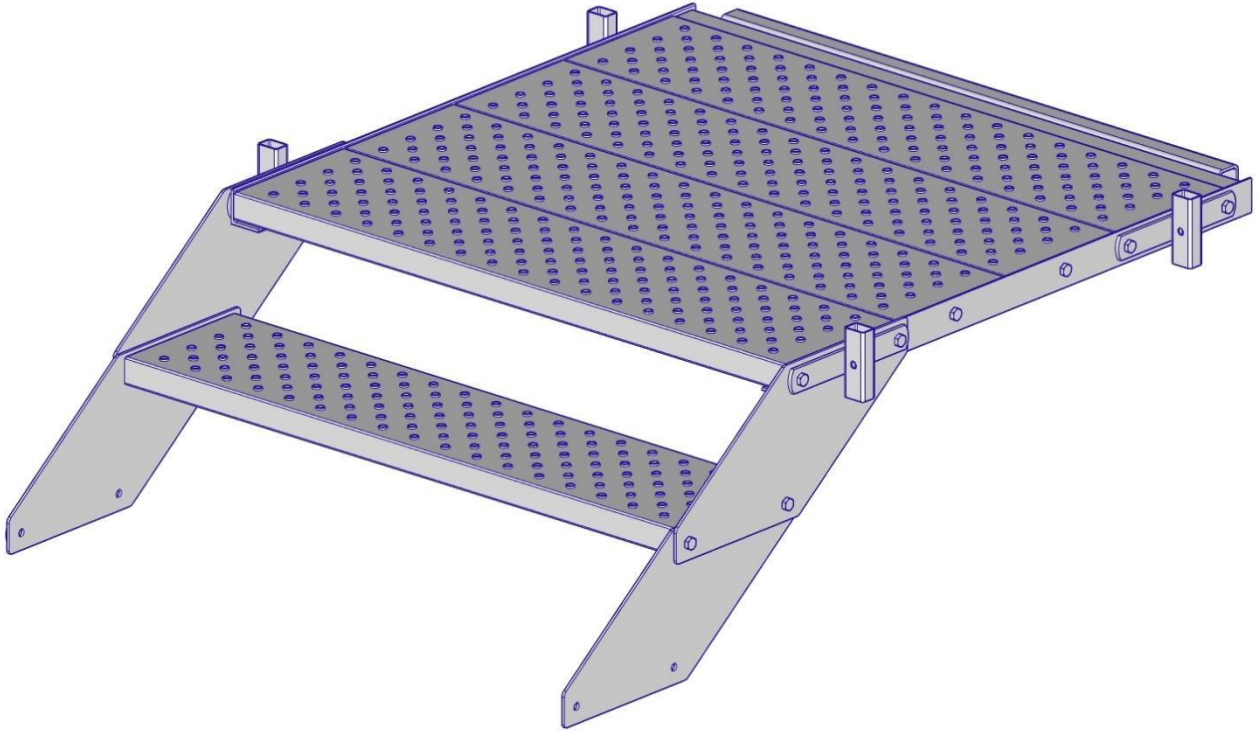
1. Dismantle the feet and the step.

Use 2 17 mm wrenches or one 17 mm wrench and an impact wrench with a 17 mm nut to loose all bolts and nuts at the bottom end of the side beam.

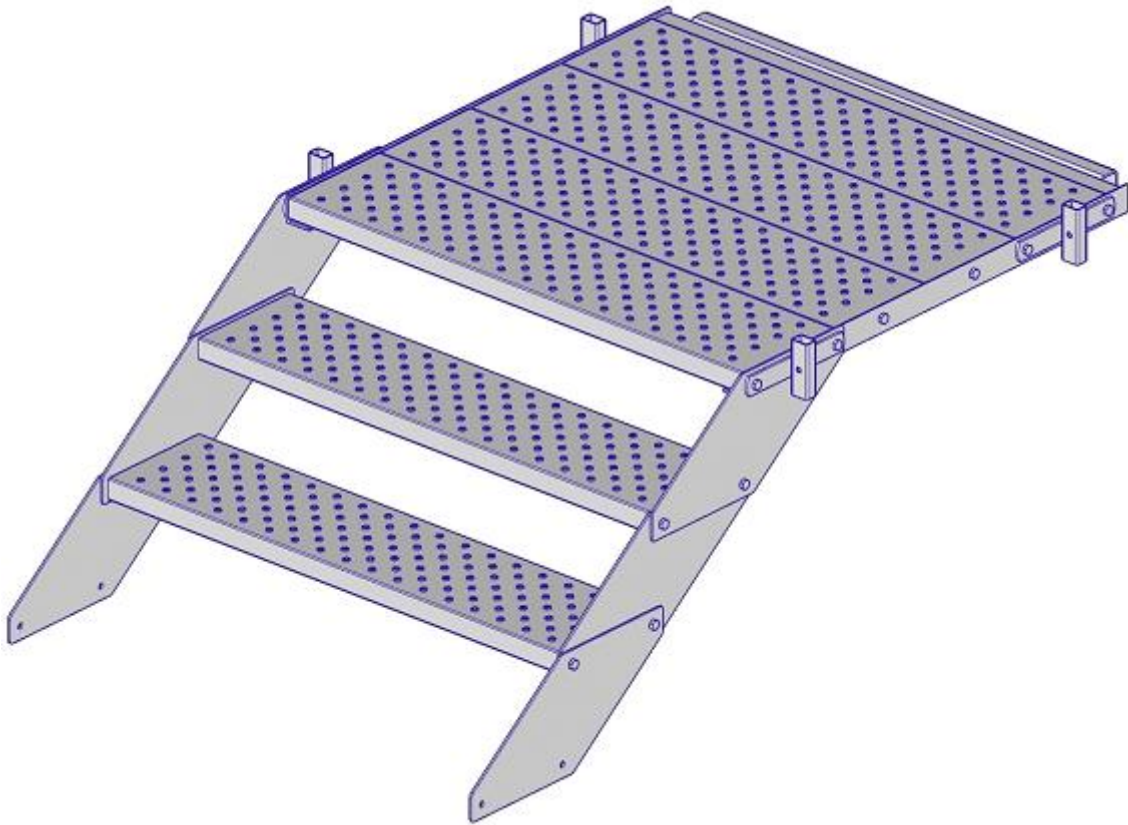


2. Insert 2 side beams and 1 step.

Insert 2 side beams and connect everything with a step using 4 bolts M10x35 8.8 DIN 933 and 4 stop nuts M10 8 DIN 985.

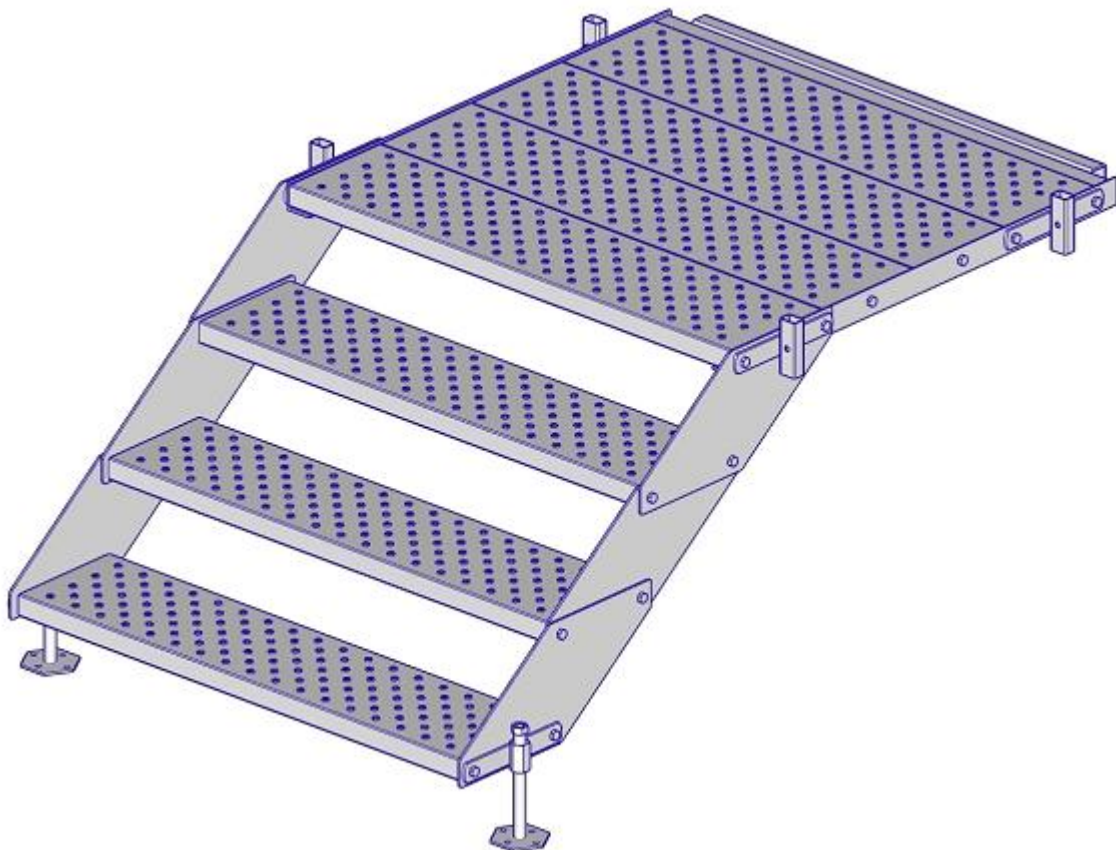


3. Insert 2 side beams and 1 step.

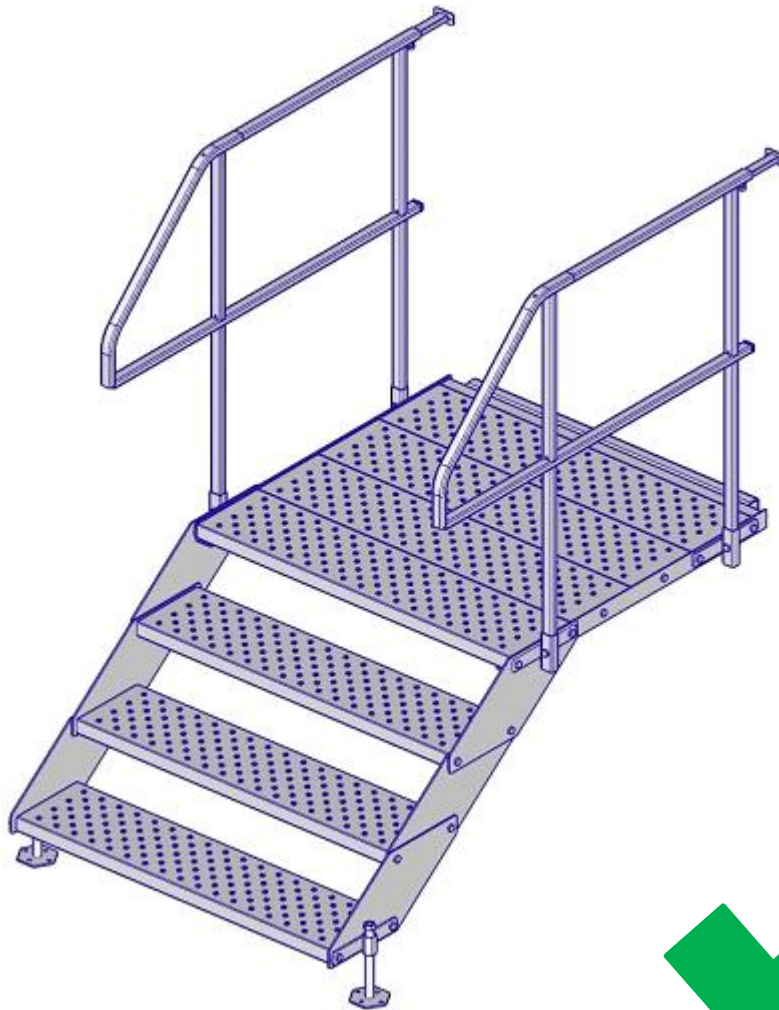


4. Insert 2 side beams and 1 step.

Attach the feet and the bottom step via the remaining holes at the lower part of the side beams using 4 bolts M10x35 8.8 DUB 933 and 4 stop nuts M10 8 DIN 985.



5. The other installation steps are the same like the ones for the Modular step-up / step-down 1 step.



Conversion of the 1 step into 90°.



Height 230 – 360 mm

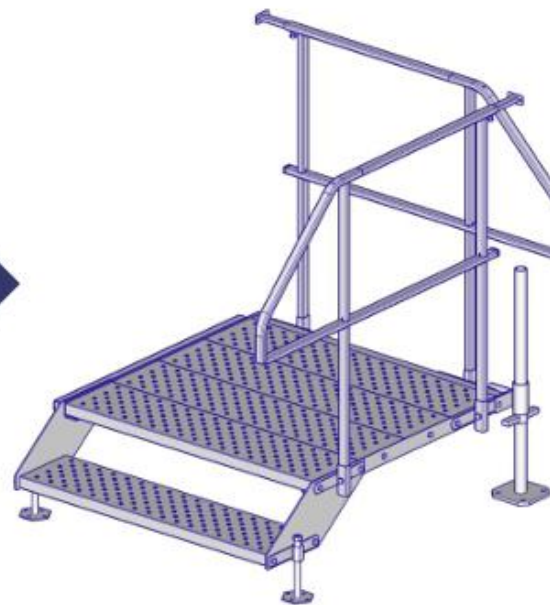


Needed extra parts

- 1 x Base Jack



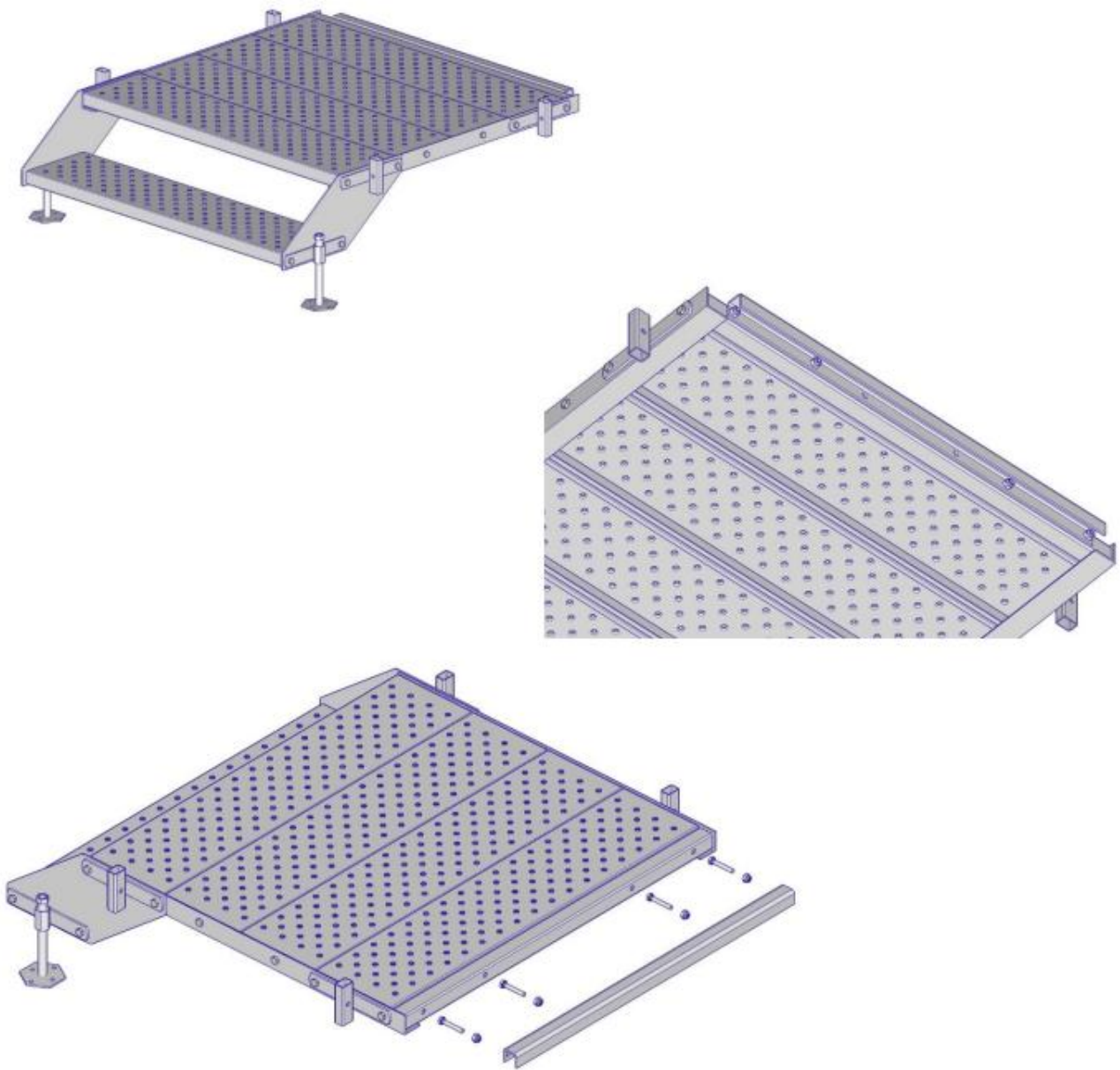
- 1 x Base Jack Attachment



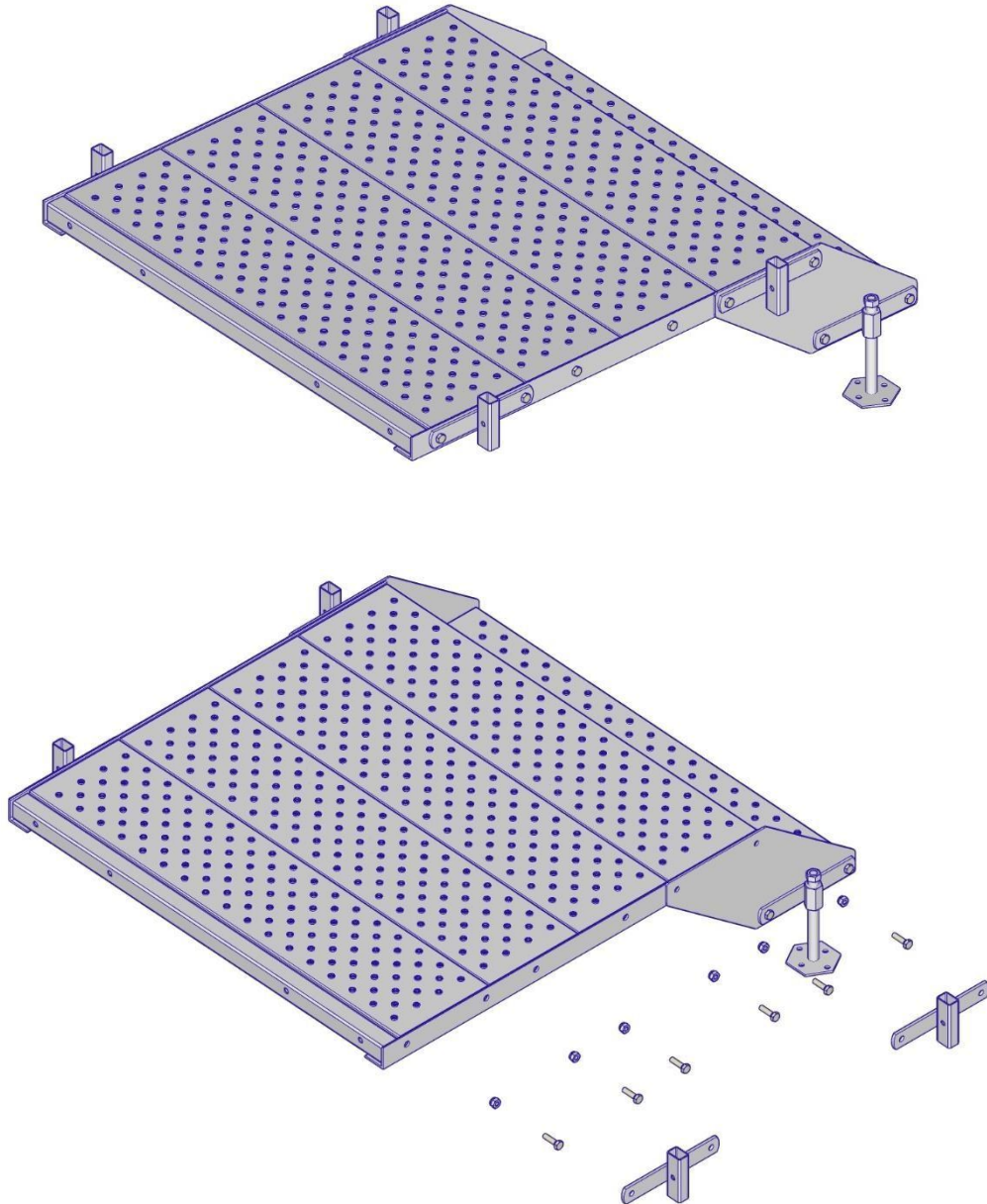
Height 230 – 360 mm

Also the 2-step Stair Podest and the 3-step Stair Podest can be converted into a 90° version using the same installation steps

1. Dismantle the fixation.



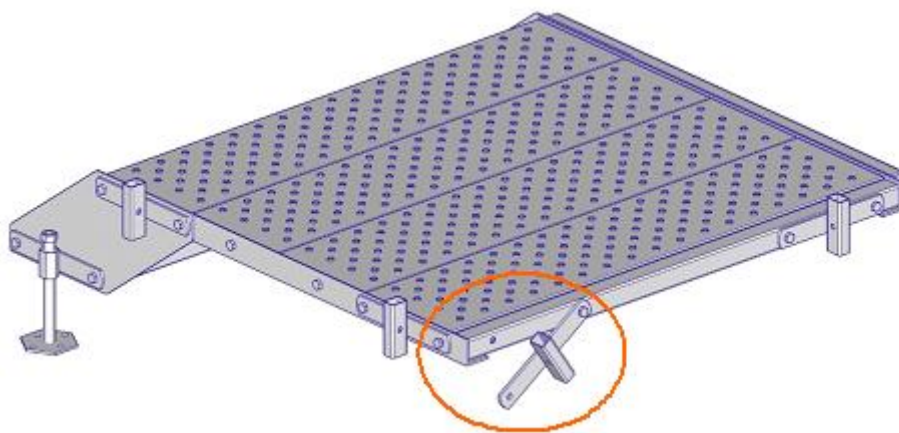
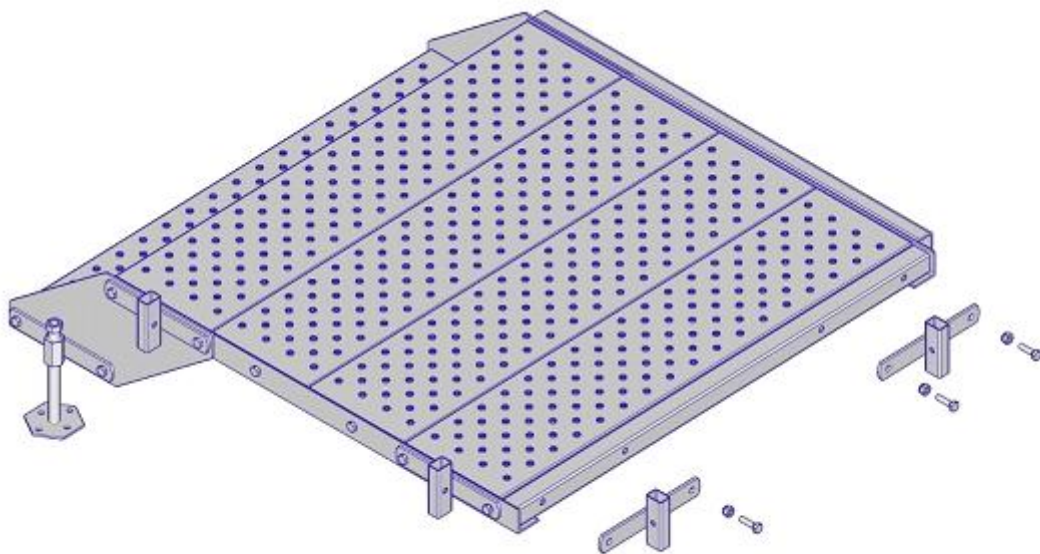
2. Dimantle the handrail holders.



3. Re-attach the handrail holders.

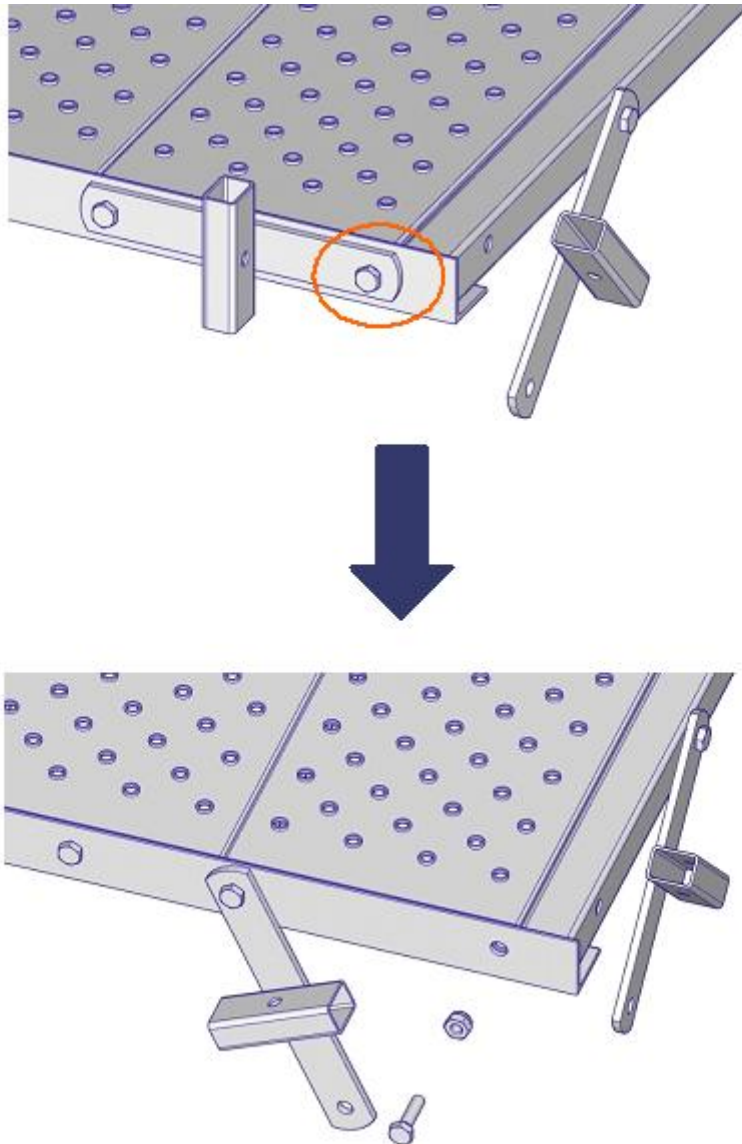
Re-attach both handrail holders using the bolts and nuts that have been dismantled together with the fixation earlier.

Leave the hole in the corner open for now.



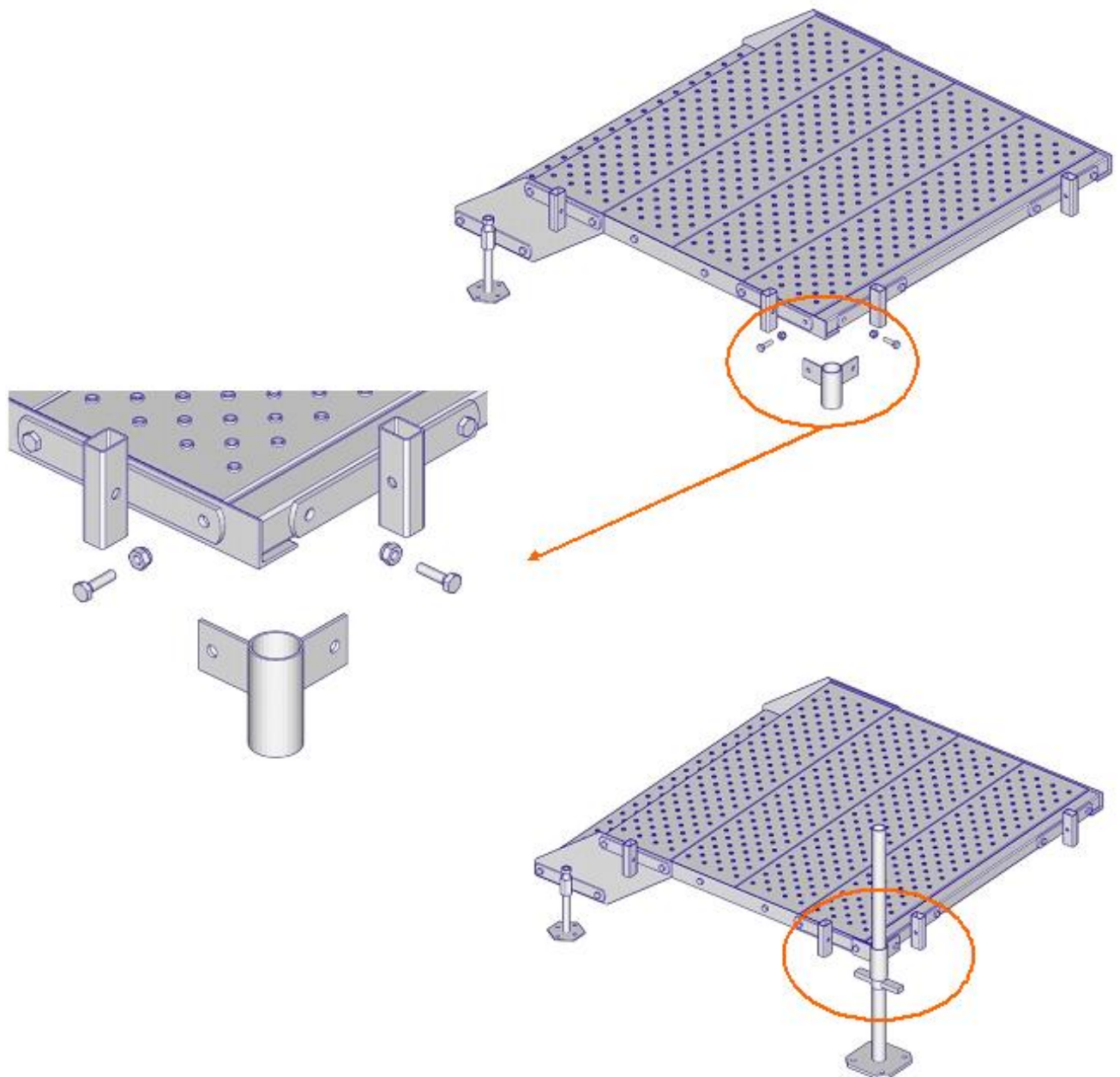
4. Prepare the other corner handrail holder.

Loose 1 olt and nut of the other corner handrail holder.



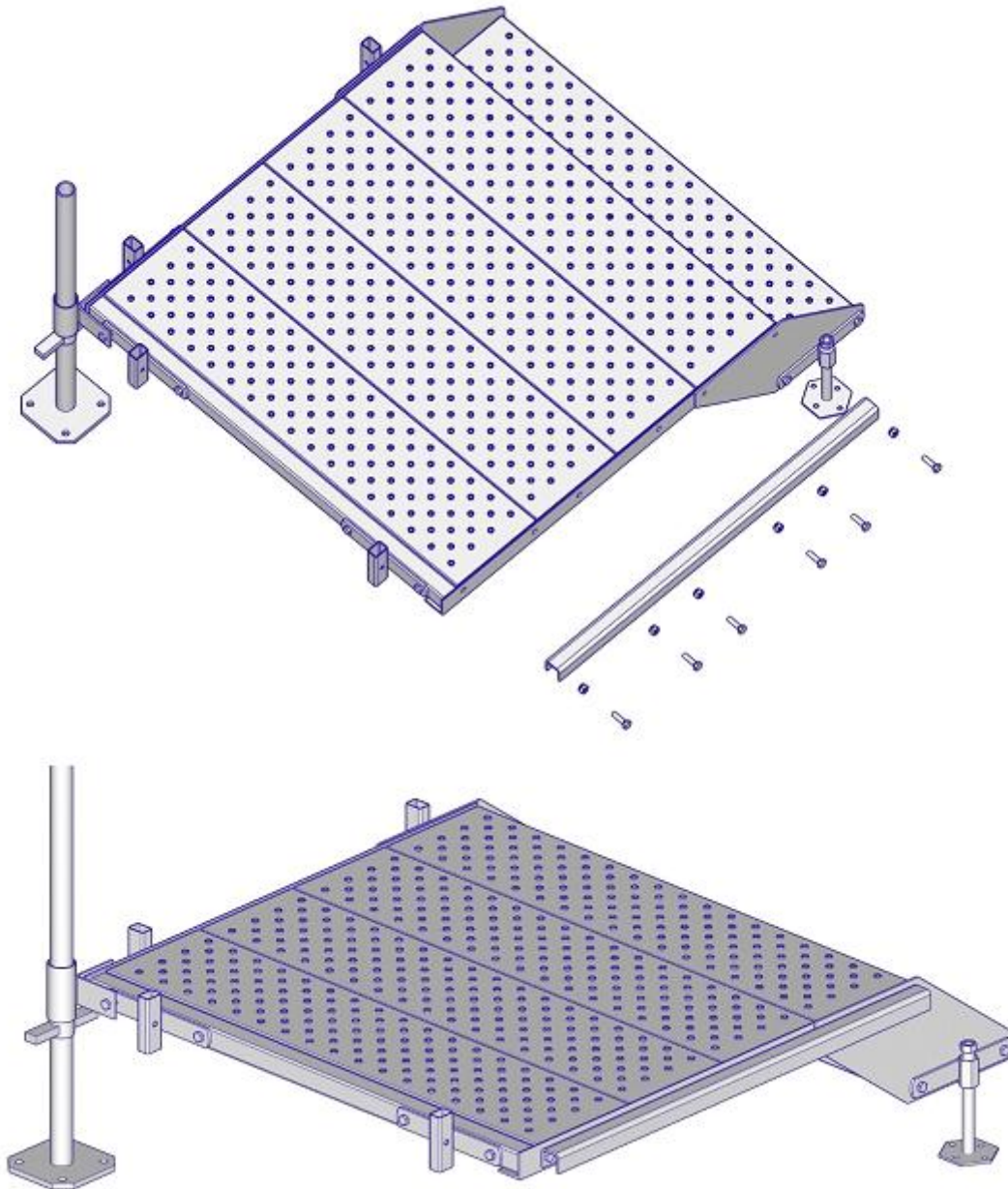
EasyStairs

NEXT LEVEL SAFETY

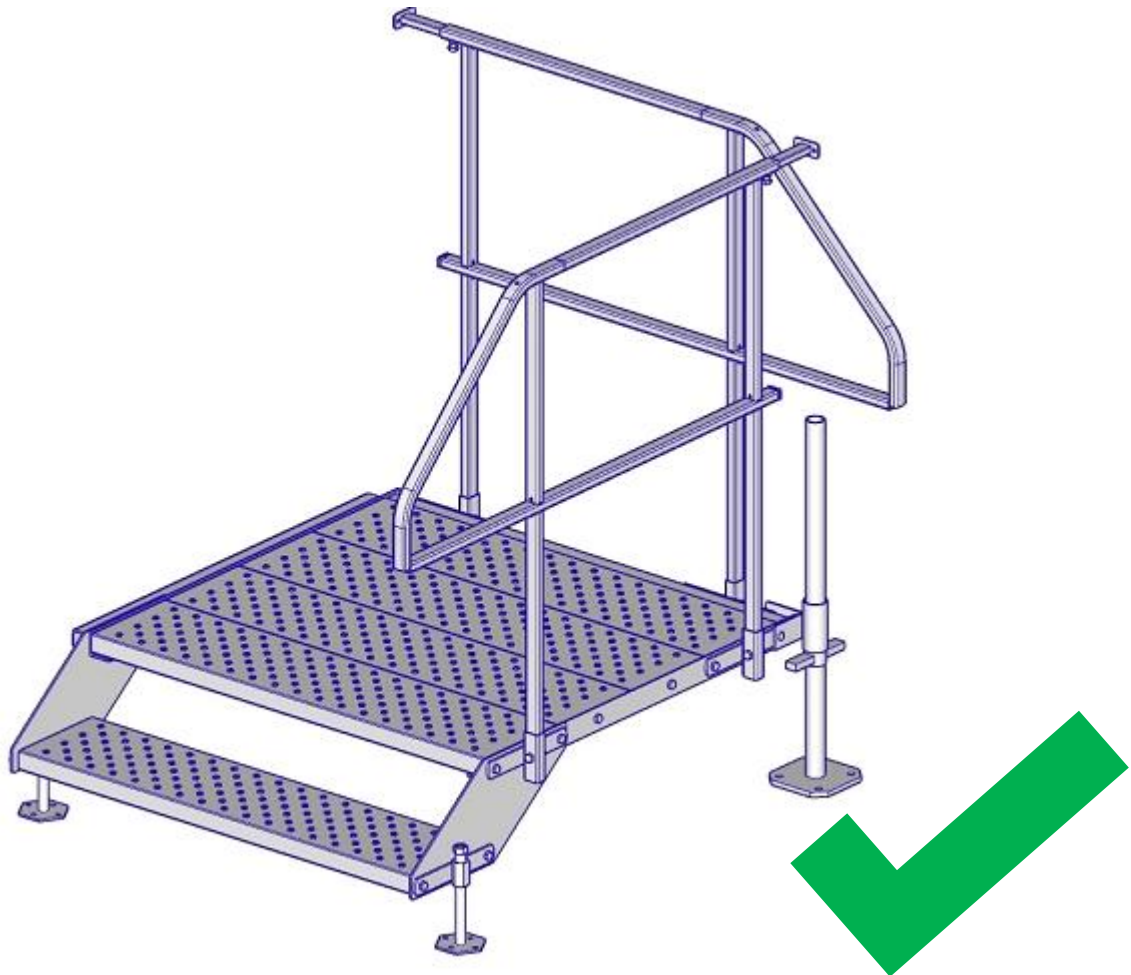


6. Attach the fixation.

Attach the fixation using the bolts and nuts that have been dismantled together with the handrail holders earlier.



7. The other installation steps are the same like the ones for the Modular step-up / step-down 1 step.



General Safety.

When installing all EasyStairs products, safety must be observed. The maximum load on individual components must always be kept in mind.

The maximum height and of each EasyStairs products must be observed.

If the Modular step-up / step-down show significant damage that affects the statics, it must be removed from traffic immediately.

Before any use, special attention must be paid to the intrinsic safety. Statutory regulations and guidelines of the local authorities must be observed and followed at all times.

When in doubt please contact EasyStairs before usage.

